

## Hortus soil moisture logger Start Up process

### *Use a Magnet to Force start up and a Website Connection*

Using a small magnet the logger can be activated and forced to attempt an immediate connection to the network.

Hold the magnet over the magnet icon as seen below in figure 1.

A single tone will sound while the magnet is in the correct position.

Hold the magnet in this position until the blue light appears and the tone stops.

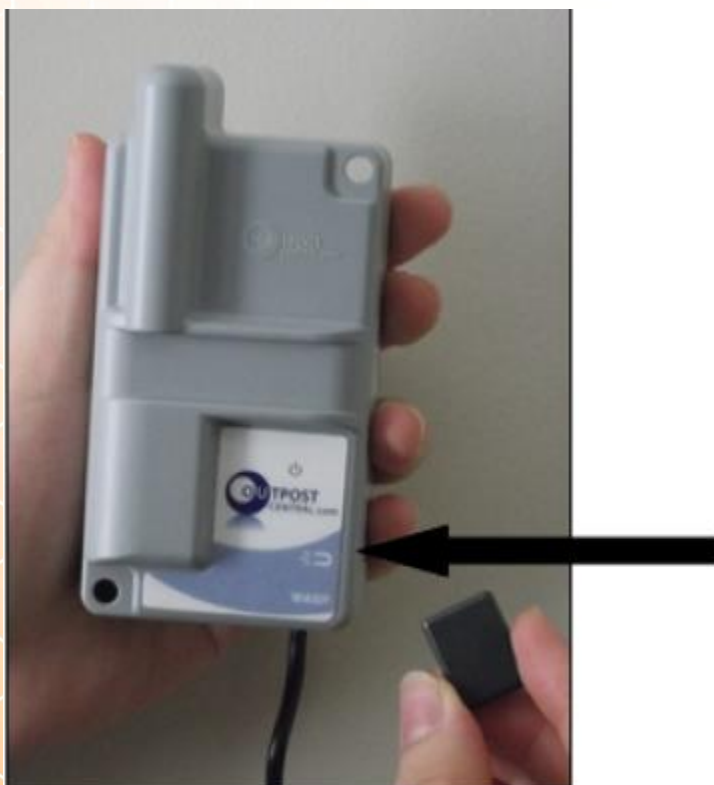


Figure 1

Remove the magnet and an ascending tone will sound to indicate successful activation.

Wait for 30 to 40 seconds during which time the blue light will flash and a short activity tone will both sound approximately every 5 seconds.

If this is the first time the unit has been activated since shipment from overseas, the network registration process may take several minutes while the unit does a full channel scan to find the operator frequency.

Upon a successful connection the light will turn green and a positive “ascending” tone will sound to indicate a successful connection .



**Green light indicates a successful connection to [Outpostcentral.com](http://Outpostcentral.com)**

Upon a failed connection, the light will turn red and a descending tone will sound. This may be due to poor cellular reception. Move to a better signal area and re-try.